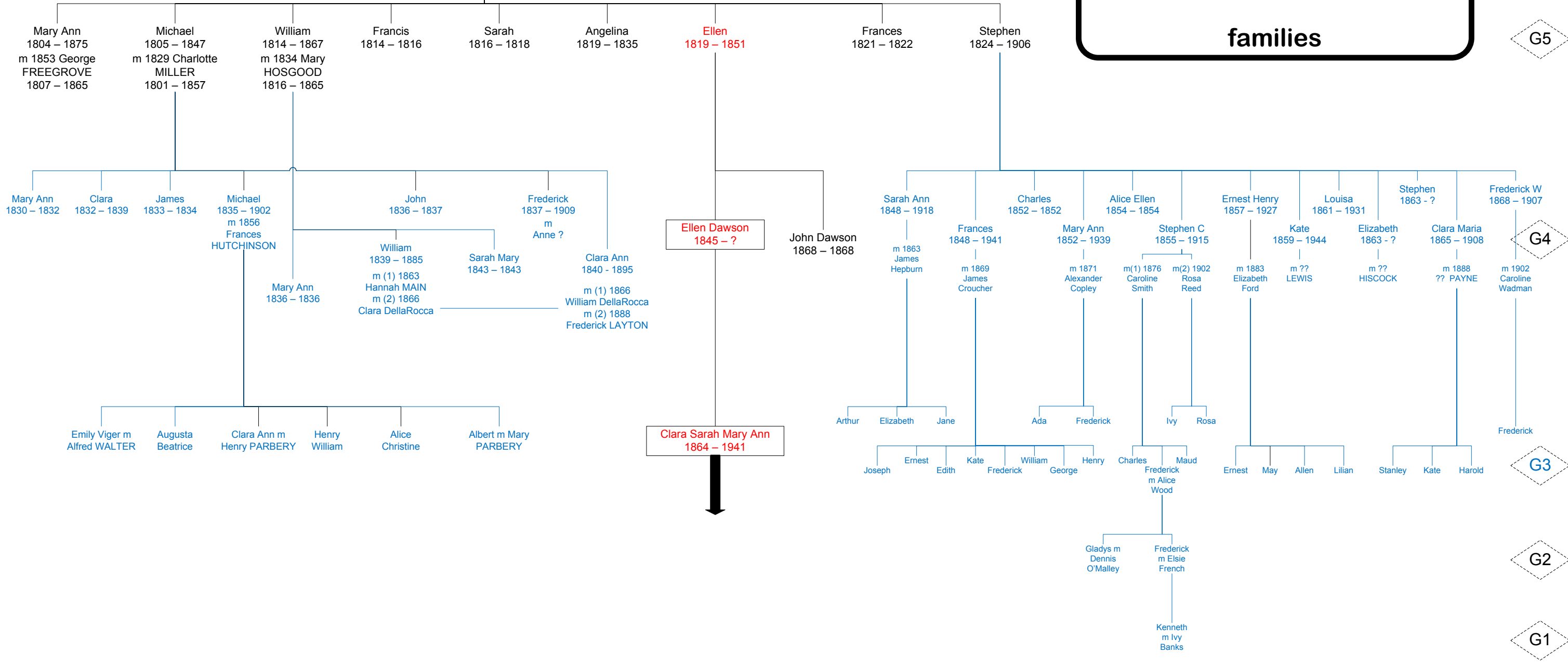


# DELLA ROCCA families

Michael James (1763 - 1838) m Sarah ?? (1780 - 1857)



G6  
G5  
G4  
G3  
G2  
G1

**KEY**  
 Names in RED indicate Primary ancestors  
 Names in BLACK indicate Secondary ancestors  
 Names in BLUE show Tertiary or later ancestors  
 Dates are, in general, those of baptism or burial.  
 This tree is not, and is not intended to be, complete.  
 For more details see the DELLA ROCCA booklet.  
 All information in this tree ©Chris Green JUL 08